

Visteon Remote Access Instructions for Windows

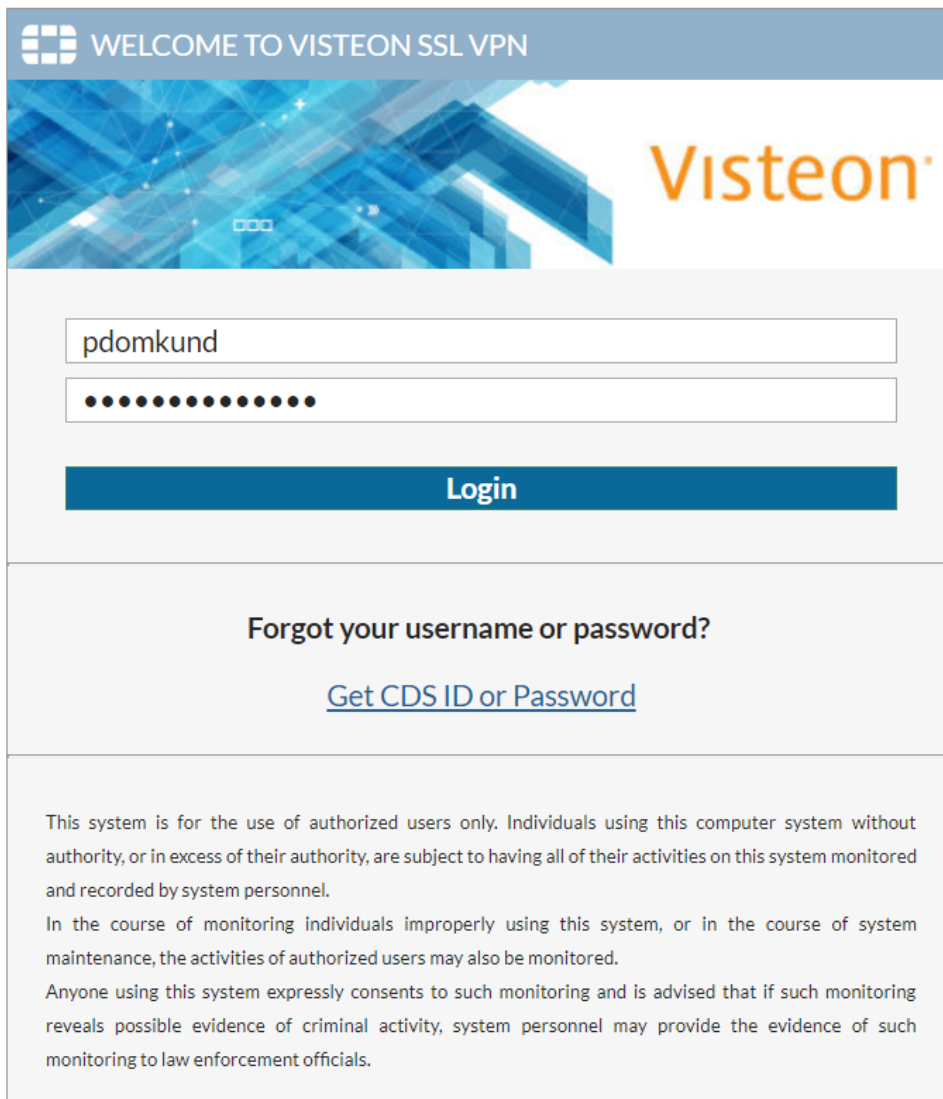
There are two ways to connect to Visteon's intranet (myPortal), supplier portal and company network using a remote access solution – through portal connect or network connect. Portal connect only allows the user to access myPortal. Network connect using FortiClient allows the user to access myPortal, any application, server or network resource. Use the method appropriate to the level of access desired. Below are step-by-step instructions for both.

1. Access with Portal Connect – Also called web-mode remote access

With this method, users can only access myPortal or the supplier portal using a web browser and internet connection.

Access <https://remote.visteon.com>.

Provide your Visteon CDSID and password. Click Login.



WELCOME TO VISTEON SSL VPN

Visteon

pdomkund

●●●●●●●●●●●●

Login

Forgot your username or password?

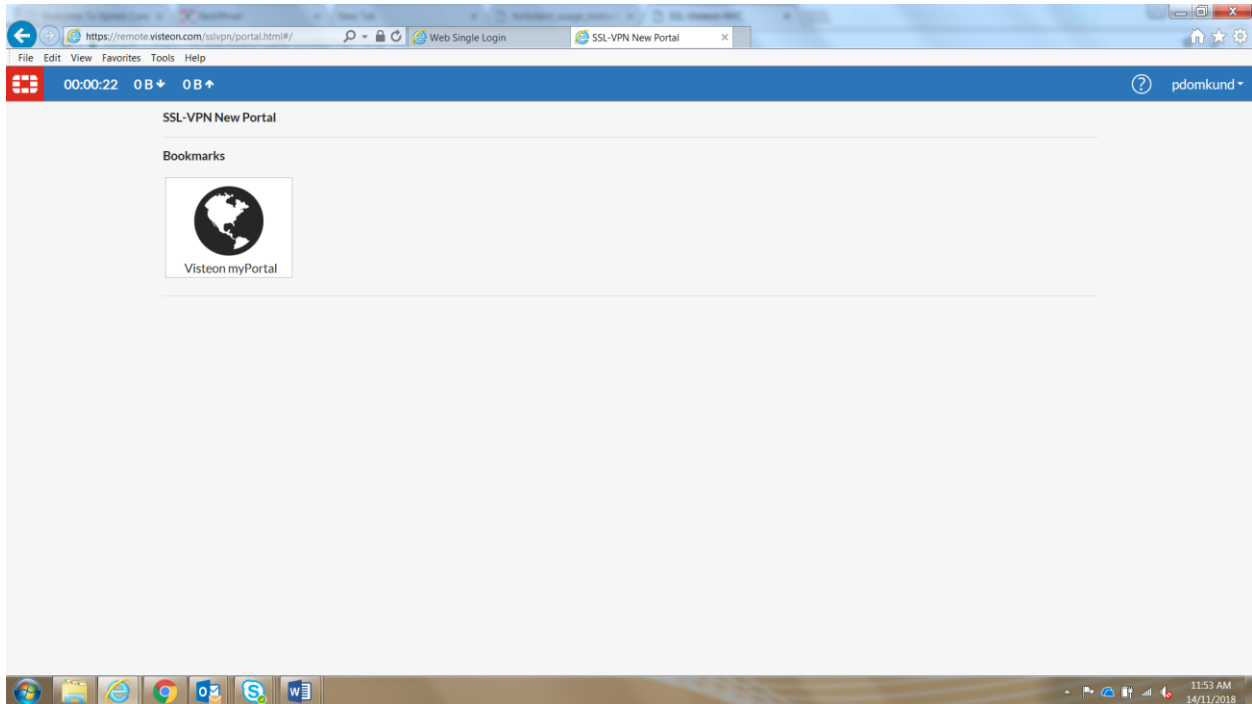
[Get CDS ID or Password](#)

This system is for the use of authorized users only. Individuals using this computer system without authority, or in excess of their authority, are subject to having all of their activities on this system monitored and recorded by system personnel.

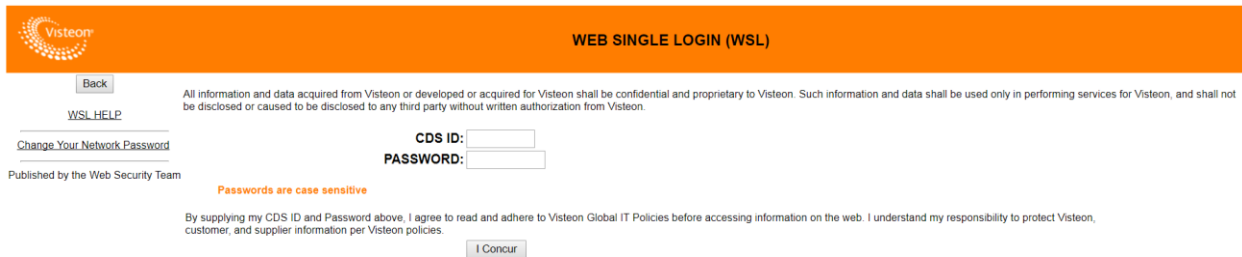
In the course of monitoring individuals improperly using this system, or in the course of system maintenance, the activities of authorized users may also be monitored.

Anyone using this system expressly consents to such monitoring and is advised that if such monitoring reveals possible evidence of criminal activity, system personnel may provide the evidence of such monitoring to law enforcement officials.

You will be connected to myPortal. Under Bookmarks, click on Visteon myPortal.



You will be directed to the Web Single Login (WSL) page. Provide your CDSID and password and click I Concur to access Visteon myPortal.

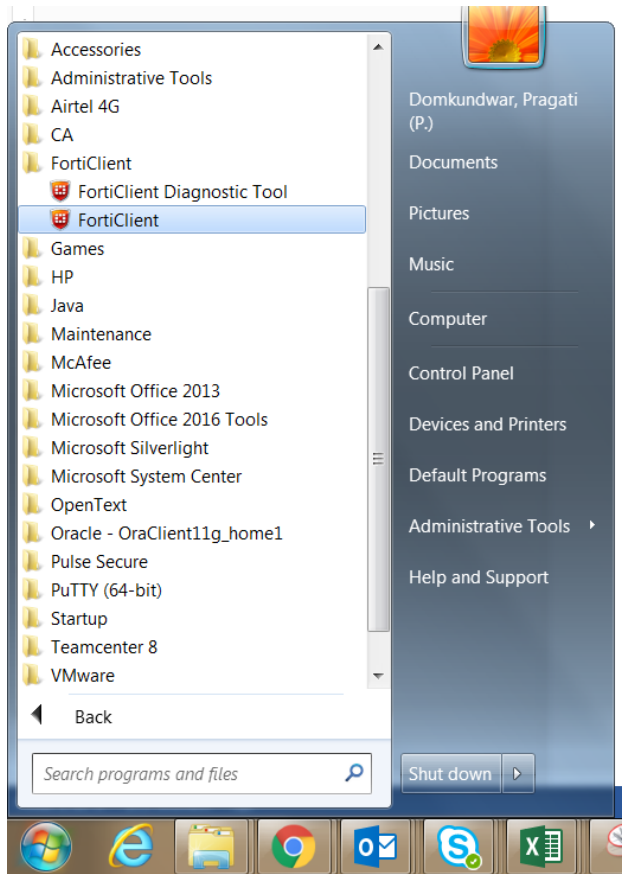


2. Access with Network Connect – Also called tunnel-mode remote access

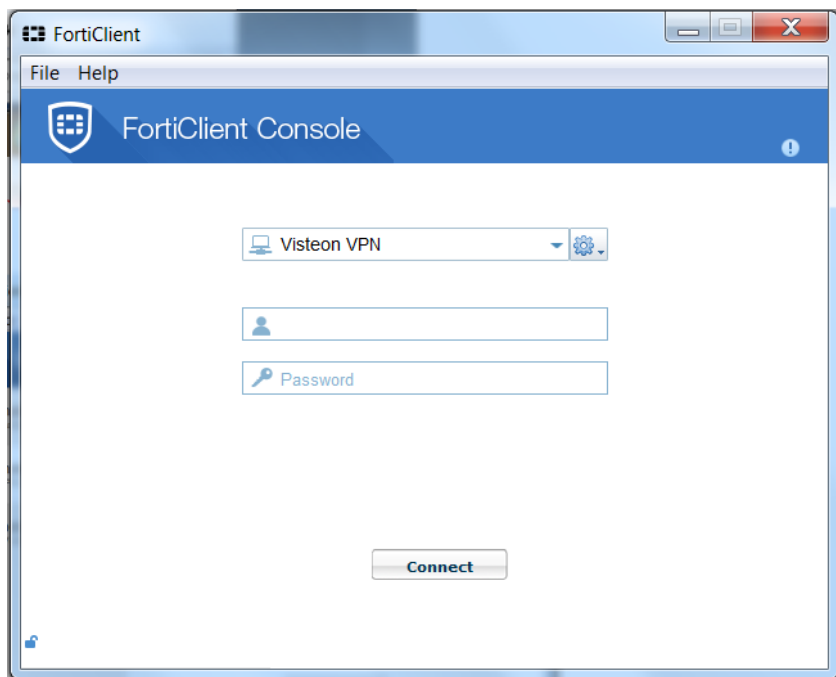
By using this method, you can access myPortal, the supplier portal and company network, including any application, server or network resource. FortiClient software is used to establish VPN connectivity, and this is intended for use when outside the Visteon network.

Note: FortiClient software has been pushed to Visteon computers silently, so no installation of software is required by the user.

Access the Windows Start menu and look in the All Programs menu for FortiClient software.



Click on FortiClient.



Provide your Visteon CDSID and password and click Connect.

The status will appear the same window. Once the status has reached 100%, your computer will be connected to the Visteon SSL VPN. You can now access myPortal, and supplier portal, any application, server or network resource.

