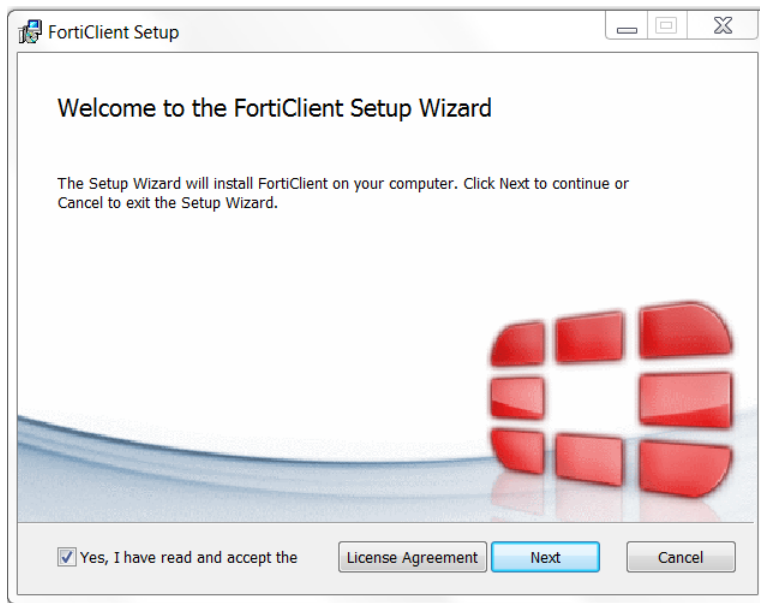


# Forticlient Install Instructions for Windows & Linux

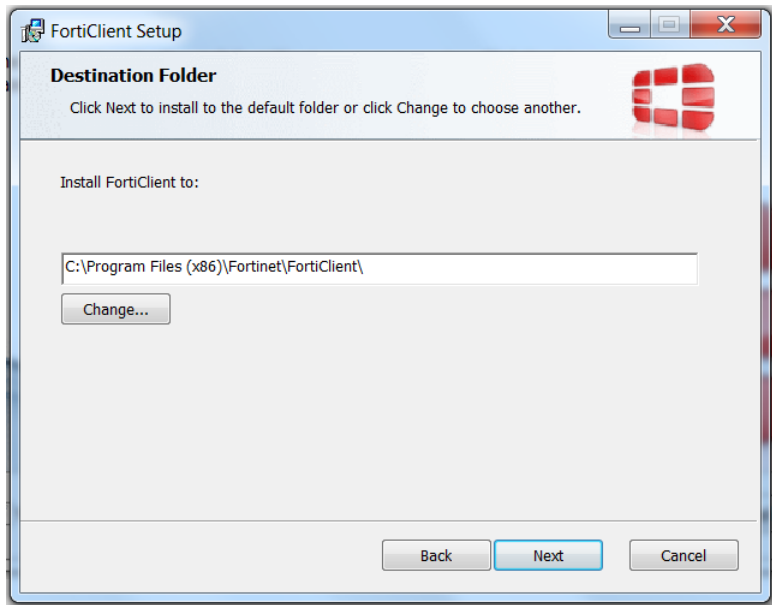
## 1. For Windows Operating System

Note: These instructions are for Visteon partners. Visteon employees should already have FortiClient installed on their company computers.

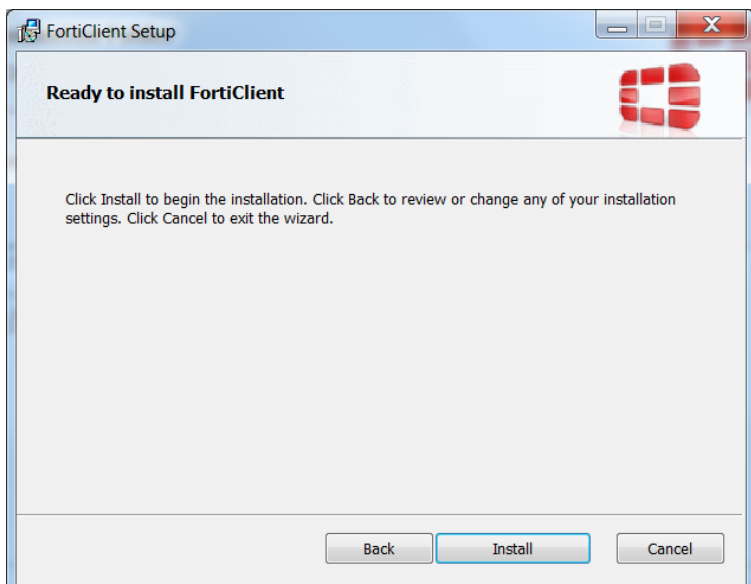
1. Download FortiClient  
([https://visteon.com/FortiClient/FortiClientSetup\\_5.6.5.1150\\_x64.exe](https://visteon.com/FortiClient/FortiClientSetup_5.6.5.1150_x64.exe) ).
2. Double click the downloaded file.
3. Check “Yes, I have read and accept the License Agreement” after reading the agreement.
4. Click Next.



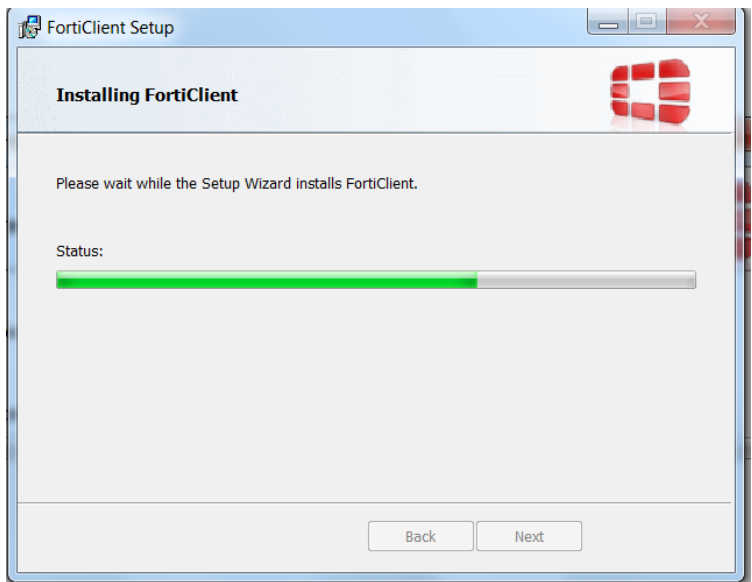
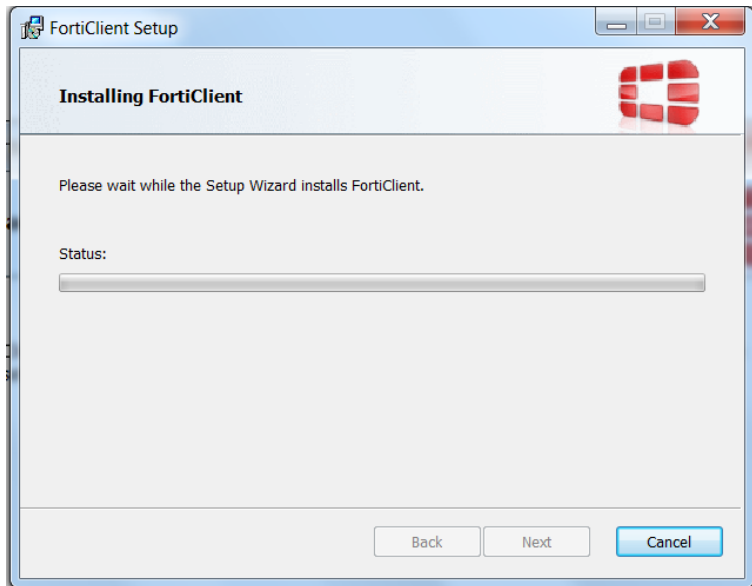
5. Verify the destination folder and click Next.



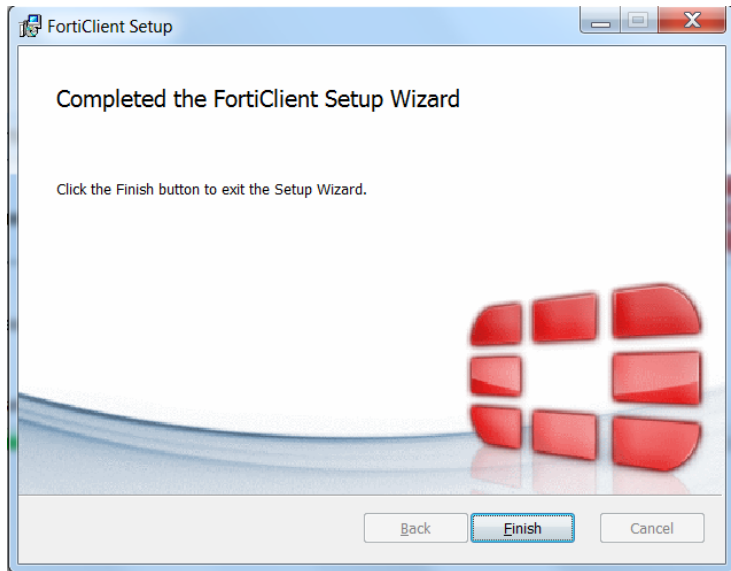
6. Click Install.



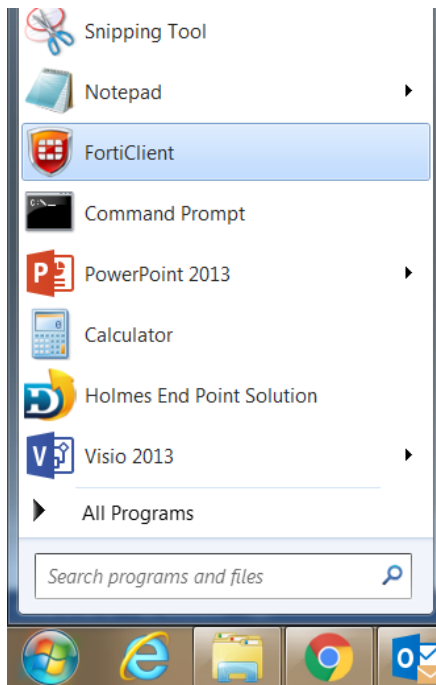
7. Installation begins.



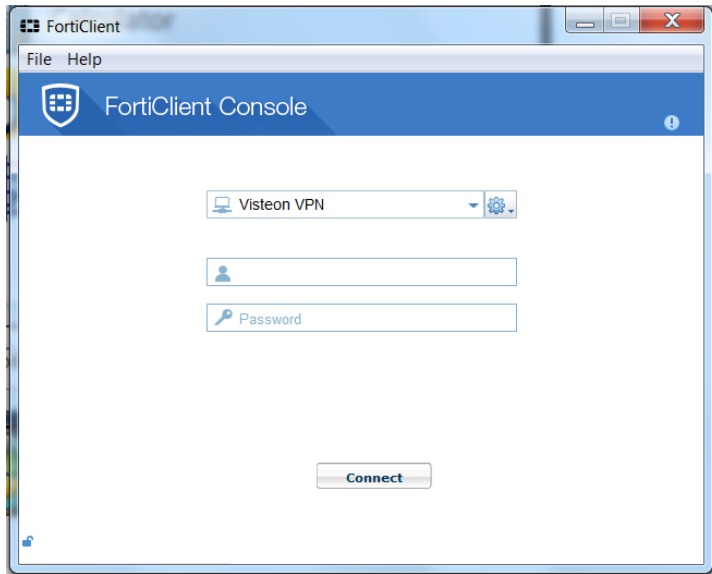
8. Click Finish once the installation is complete.



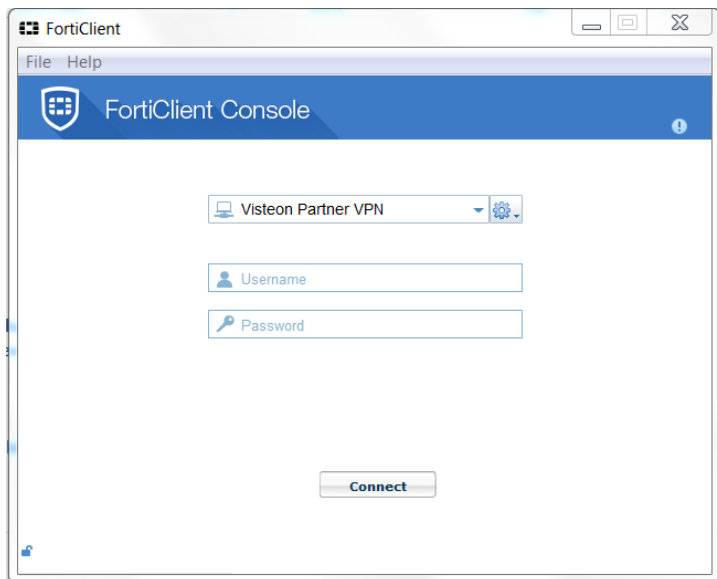
FortiClient is installed on your PC.



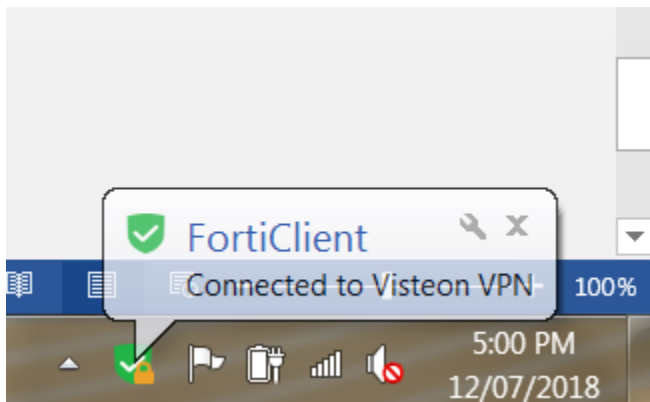
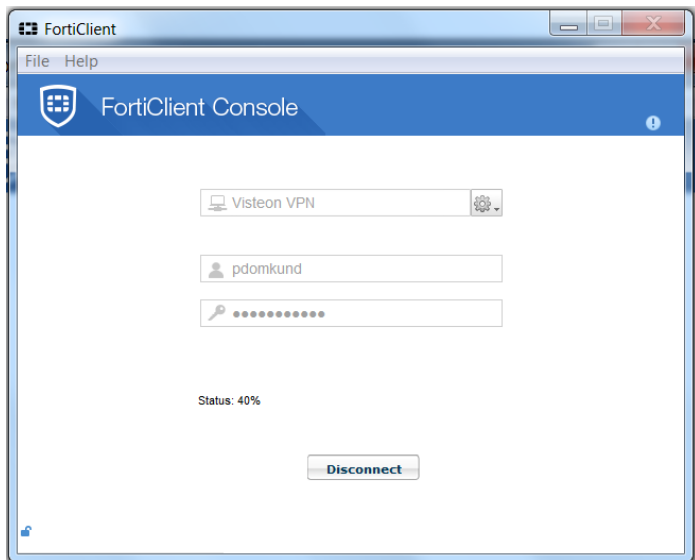
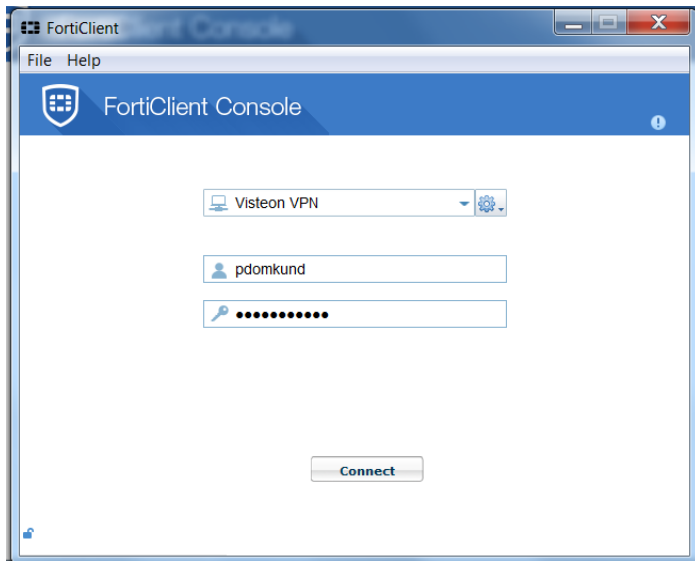
9. Click on the FortiClient application.
  - a. Employees to use Visteon VPN Connection in console.



b. Partners to use Visteon Partner VPN Connection in console.



10. Provide your Visteon CDSID and password and click Connect.



## 2. For Linux/Ubuntu Operating Systems

FortiClient remote access from Linux OS is controlled by a limited access group (LAG). Users in the Linux LAG group are only allowed remote access from Linux/Ubuntu.

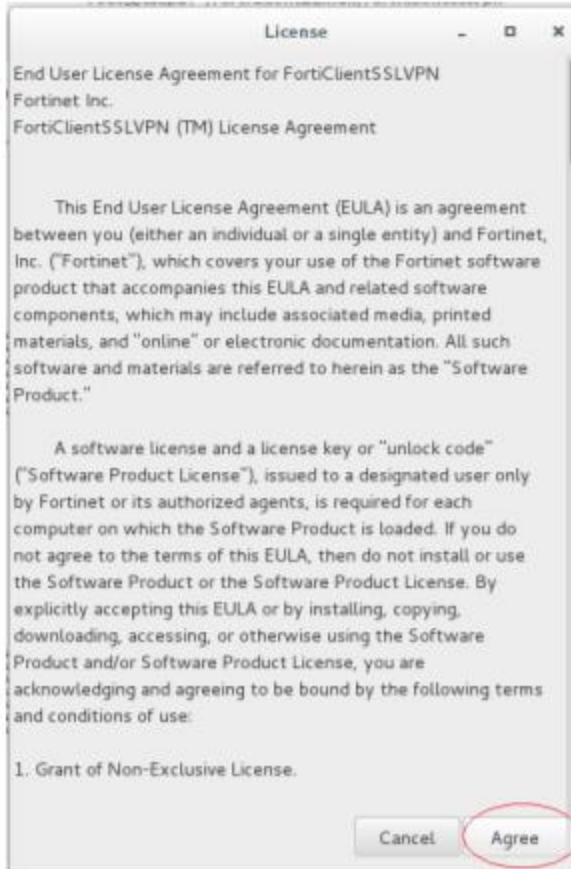
To get Linux LAG group membership, raise a [VESS request](#). Once LAG group membership is complete, follow the steps below to install FortiClient.

Download the FortiClient software from [Visteon.com](#).

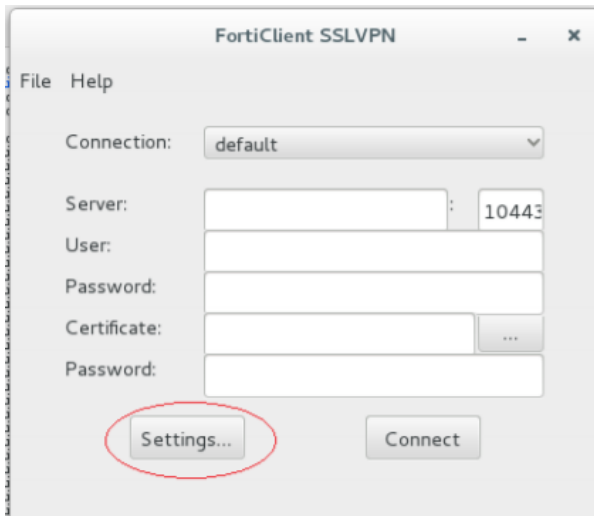
1. Log in as a root user on your Linux PC.
2. Download the FortiClient software from [Visteon.com](#).
3. Via the file explorer, right click on the GZIP file (forticlientsslvpn\_linux\_4.4\_2335.tar.gz) and extract its files.
4. After extraction, go to the extracted folder and execute the file fortisslvpn.sh as shown below:

```
forticlientsslvpn/64bit/helper/fcrt
forticlientsslvpn/64bit/helper/setup_linux.sh
forticlientsslvpn/64bit/helper/fctrouter.nke.ke.xt/
forticlientsslvpn/64bit/helper/fctrouter.nke.ke.xt/Contents/
forticlientsslvpn/64bit/helper/fctrouter.nke.ke.xt/Contents/Resources/
forticlientsslvpn/64bit/helper/fctrouter.nke.ke.xt/Contents/Resources/English.lproj/
forticlientsslvpn/64bit/helper/fctrouter.nke.ke.xt/Contents/Resources/English.lproj/Info.plist.strings
forticlientsslvpn/64bit/helper/fctrouter.nke.ke.xt/Contents/MacOS/
forticlientsslvpn/64bit/helper/fctrouter.nke.ke.xt/Contents/MacOS/fctrouter.nke
forticlientsslvpn/64bit/helper/fctrouter.nke.ke.xt/Contents/Info.plist
forticlientsslvpn/64bit/helper/subproc
forticlientsslvpn/64bit/helper/waitppp.sh
forticlientsslvpn/64bit/helper/fortisslccacert.pem
forticlientsslvpn/64bit/helper/showlicense
[root@ldap5 forticlient_linux]# cd forticlientsslvpn/
[root@ldap5 forticlientsslvpn]# ls
32bit 64bit fortisslvpn.sh
[root@ldap5 forticlientsslvpn]# ./fortisslvpn.sh
```

5. Accept the Licence agreement.



6. Click on settings.



7. Click on the "+" button.



The screenshot shows a 'Settings' dialog box with two main sections: 'Global settings' and 'Connection Profiles'. In the 'Global settings' section, there are two checkboxes: 'Keep connection alive until manually stopped' (checked) and 'Start connection automatically' (unchecked). Below these are three input fields for 'Proxy:', 'User:', and 'Password:'. The 'Connection Profiles' section features a list on the left with one entry, 'default'. To the right of the list are five rows of input fields: 'Server:' (with a port field containing '10443'), 'User:', 'Password:', 'Certificate:' (with a browse button), and another 'Password:'. At the bottom left of the 'Connection Profiles' section, there are two buttons: a '+' button (circled in red) and a '-' button. A 'Done' button is located at the bottom right of the dialog.

8. Give a name to the connection.
9. In the Server field, add "remote.visteon.com/linux"
10. Change the port number to 443.
11. Add your username password and click Create.

**New connection**

Connection: Visteon VPN

Server: remote.visteon.com/linux 443

User: Domain user Name

Password: Domain Password

Certificate: [ ] ...

Password: [ ]

Cancel Create

12. Click "Done."

**Settings**

**Global settings**

Keep connection alive until manually stopped

Start connection automatically

Proxy: [ ] : [ ]

User: [ ]

Password: [ ]

**Connection Profiles**

Visteon VPN

hcl

default

Server: remote.visteon.com/linux 443

User: username

Password: [ ]

Certificate: [ ] ...

Password: [ ]

Done

13. Select the proper connection. In this case, we select "Visteon VPN" and the required fields automatically populate.



14. At this stage the connection is established.

