

Siemens Enterprise Communications, Inc.



# Gateway to Visteon

## *G2V Supported Anti-Virus Guide*

**Version:** 1.6.5 – November 2010

•  
•  
•  
•  
•  
•  
•  
•  
•  
•  
•

---

## Supported Anti-Virus Software

The following Anti-Virus applications are fully supported. It is highly recommended that one of the following applications be used for accessing G2V. Please note that this list will change as new versions are released by their vendors. Normally, the current and previous release of these applications will remain on the supported list. Newer versions released may not be immediately supported or compatible, please consult this list before updating to a newer version.

Vendor	Product	Version	Windows XP	Windows Vista	Windows 7
McAfee, Inc.	VirusScan Enterprise	8.7.x	✓	✓	✓
	VirusScan 2009	13.x	✓	✓	--
	VirusScan 2010	14.x	✓	✓	✓
Symantec Corp.	Norton Anti-Virus 2010	17.x	✓	✓	--
	Norton Anti-Virus 2011	18.x	✓	✓	✓
	Symantec Endpoint Protection	11.x	✓	✓	✓
	Symantec Endpoint Protection	12.x	✓	✓	✓
Trend Micro, Inc.	Anti-Virus	17.x	✓	✓	--
	Anti-Virus	17.5	✓	✓	✓
	OfficeScan	8.x	✓	✓	--
	OfficeScan	10.x	✓	✓	✓

**Notes:**

Please see the notes at the end of this guide for special instructions for Vista users with Norton Anti-Virus 2009. The **products highlighted in yellow** will be removed from the supported list in the next update. If you are using one of these products, you should consider upgrading to a newer version.

## Compatible Anti-Virus Software

The applications below have been specified as compatible by the Anti-Virus Host Check vendor. Support for these applications may be removed at any time, especially in the case of older versions that may be at or near end-of-life status. Please note that Visteon support for any product on this list will be offered on a best-effort basis, and no applications other than those officially supported (listed above) are guaranteed to work with G2V remote access.

### **ALWIL Software**

- avast! Antivirus (4.8.x)
- avast! Antivirus (4.x)
- avast! Antivirus (managed)(4.x)
- avast! Antivirus Professional (4.8.x)
- avast! Antivirus Professional (4.x)
- avast! Free Antivirus (5.x)
- avast! Internet Security (5.x)
- avast! Pro Antivirus (5.x)
- avast! Server Edition (4.x)

- AVG 8.0 [AntiVirus] (8.x)
- AVG 9 [AntiVirus] (9.x)
- AVG Anti-Virus Free (8.x)
- AVG Anti-Virus Free (9.x)

### **Computer Associates International, Inc.**

- CA Anti-Virus (10.x)
- CA Anti-Virus (8.x)
- CA Anti-Virus (9.x)
- CA Anti-Virus Plus (2.x)
- CA eTrust Antivirus (7.x)
- CA eTrust Internet Security Suite AntiVirus (7.x)
- CA eTrustITM Agent (8.x)
- eTrust Antivirus (6.0.x)

### **AVG Technologies / Grisoft Inc.**

- AVG 10 [AntiVirus] (10.x)

eTrust EZ Antivirus (6.1.x)  
eTrust EZ Antivirus (6.2.x)  
eTrust EZ Antivirus (6.4.x)  
eTrust EZ Antivirus (7.x)  
eTrust EZ Armor (6.1.x)  
eTrust EZ Armor (6.2.x)  
eTrust EZ Armor (7.x)

### **Kaspersky Labs**

Kaspersky Anti-Virus (11.x)  
Kaspersky Anti-Virus (9.x)  
Kaspersky Anti-Virus 2006 Beta (6.0.x)  
Kaspersky Anti-Virus 2009 (8.x)  
Kaspersky Anti-Virus 6.0 (6.x)  
Kaspersky Anti-Virus 6.0 Beta (6.x)  
Kaspersky Anti-Virus 7.0 (7.x)  
Kaspersky Anti-Virus Personal (4.5.x)  
Kaspersky Anti-Virus Personal (5.0.x)  
Kaspersky Anti-Virus Personal Pro (5.0.16.x)  
Kaspersky Anti-Virus Personal Pro (5.0.20.x)  
Kaspersky Anti-Virus Personal Pro (5.0.x)  
Kaspersky Anti-Virus for Windows File Servers (5.x)  
Kaspersky Anti-Virus for Windows File Servers (6.x)  
Kaspersky Anti-Virus for Windows Servers (6.x)  
Kaspersky Anti-Virus for Windows Workstations (5.0.x)  
Kaspersky Anti-Virus for Windows Workstations (6.x)  
Kaspersky Anti-Virus for Workstation (5.0.x)  
Kaspersky Internet Security (11.x)  
Kaspersky Internet Security (6.x)  
Kaspersky Internet Security (9.x)  
Kaspersky Internet Security 7.0 (7.x)  
Kaspersky Internet Security 8.0 (8.x)  
Kaspersky PURE (9.x)  
Kaspersky(TM)Anti-Virus Personal 4.5 (4.5.x)  
Kaspersky(TM)Anti-Virus Personal Pro 4.5 (4.5.x)

### **McAfee, Inc.**

McAfee Internet Security 6.0 (8.x)  
McAfee Managed VirusScan (3.x)  
McAfee Managed VirusScan (4.x)  
McAfee VirusScan (10.x)  
McAfee VirusScan (11.x)  
McAfee VirusScan (12.x)  
McAfee VirusScan (4.5.1.x)  
McAfee VirusScan (8.x)  
McAfee VirusScan (8xxx)  
McAfee VirusScan (9.x)  
McAfee VirusScan (9xxx)  
McAfee VirusScan Enterprise (7.0.0.x)  
McAfee VirusScan Enterprise (7.1.0.x)  
McAfee VirusScan Enterprise (7.5.0.x)  
McAfee VirusScan Enterprise (8.0.0.x)

McAfee VirusScan Enterprise (8.x)  
McAfee VirusScan Home Edition (7.x)  
McAfee VirusScan Professional (8.x)  
McAfee VirusScan Professional (8xxx)  
McAfee VirusScan Professional (9.x)  
McAfee VirusScan Professional Edition (7.x)  
Total Protection for Small Business (4.7.x)  
Total Protection for Small Business (4.x)  
Total Protection for Small Business (5.x)

### **Microsoft Corp.**

Microsoft Forefront Client Security (1.5.x)  
Microsoft Security Essentials [Antivirus] (1.x)  
Windows Intune Malware Protection [Antivirus] (1.x)  
Windows Live OneCare (1.5.x)  
Windows Live OneCare (1.x)  
Windows Live OneCare (2.x)  
Windows OneCare Live (0.8.x)

### **Panda Software**

Panda ActiveScan 2.0 (01.x)  
Panda Antivirus + Firewall 2007 (6.x)  
Panda Antivirus + Firewall 2008 (7.x)  
Panda Antivirus 2007 (2.x)  
Panda Antivirus 2008 (3.x)  
Panda Antivirus 6.0 Platinum (6.0)  
Panda Antivirus Lite (1.x)  
Panda Antivirus Lite (3.x)  
Panda Antivirus Platinum (7.04.x)  
Panda Antivirus Platinum (7.05.04.x)  
Panda Antivirus Platinum (7.06.01.x)  
Panda Antivirus Pro 2009 (8.x)  
Panda Antivirus Pro 2010 (9.x)  
Panda Antivirus Pro 2011 (10.x)  
Panda Client Shield (4.x)  
Panda Cloud Antivirus (0.x)  
Panda Cloud Antivirus (1.x)  
Panda Endpoint Protection (5.x)  
Panda Global Protection 2009 (2.x)  
Panda Global Protection 2010 (3.x)  
Panda Global Protection 2011 (4.x)  
Panda Internet Security 2007 (11.x)  
Panda Internet Security 2008 (12.x)  
Panda Internet Security 2009 (14.x)  
Panda Internet Security 2010 (15.x)  
Panda Internet Security 2011 (16.x)  
Panda Platinum 2005 Internet Security (9.x)  
Panda Platinum 2006 Internet Security (10.x)  
Panda Platinum Internet Security (8.03.00.x)  
Panda Security for Desktops (4.x)  
Panda Security for File Servers (8.x)  
Panda Titanium 2006 Antivirus + Antispyware (5.x)

•  
•  
•  
•  
•  
•  
•  
•  
•  
•

Panda Titanium Antivirus 2004 (3.00.00)  
Panda Titanium Antivirus 2004 (3.01.01.x)  
Panda Titanium Antivirus 2004 (3.02.02.x)  
Panda Titanium Antivirus 2005 (4.x)  
Panda TruPrevent Personal 2005 (2.x)  
Panda TruPrevent Personal 2006 (3.x)  
WebAdmin Client Antivirus (3.x)

### **Sophos Plc.**

Sophos Anti-Virus (3.x)  
Sophos Anti-Virus (4.x)  
Sophos Anti-Virus (5.x)  
Sophos Anti-Virus (6.x)  
Sophos Anti-Virus (7.x)  
Sophos Anti-Virus (9.x)  
Sophos Anti-Virus version 3.80 (3.80)

### **Symantec Corp.**

Norton 360 (Symantec Corporation)(1.x)  
Norton 360 (Symantec Corporation)(2.x)  
Norton 360 (Symantec Corporation)(3.x)  
Norton 360 (Symantec Corporation)(4.x)  
Norton AntiVirus (10.x)  
Norton AntiVirus (14.x)  
Norton AntiVirus (15.x)  
Norton AntiVirus 2002 (8.00.58.x)  
Norton AntiVirus 2002 (8.x)  
Norton AntiVirus 2002 Professional (8.x)  
Norton AntiVirus 2002 Professional Edition (8.x)  
Norton AntiVirus 2003 (9.x)  
Norton AntiVirus 2003 Professional (9.x)  
Norton AntiVirus 2003 Professional Edition (9.x)  
Norton AntiVirus 2004 (10.x)  
Norton AntiVirus 2004 (Symantec Corporation)(10.x)  
Norton AntiVirus 2004 Professional (10.x)  
Norton AntiVirus 2004 Professional Edition (10.x)  
Norton AntiVirus 2005 (11.0.x)  
Norton AntiVirus 2006 (12.0.x)  
Norton AntiVirus 2006 (12.2.x)  
Norton AntiVirus 2006 (12.x)  
Norton AntiVirus Corporate Edition (7.x)  
Norton AntiVirus Corporate Edition 7.0 for Windows NT (7.x)  
Norton Internet Security (16.x)  
Norton Internet Security (7.x)  
Norton Internet Security (8.0.x)  
Norton Internet Security (8.x)  
Norton Internet Security (9.x)  
Norton Internet Security (Symantec Corporation)(10.x)

Norton Security Scan (1.x)  
Norton SystemWorks 2003 (6.x)  
Norton SystemWorks 2004 Professional (7.x)  
Norton SystemWorks 2005 (8.x)  
Norton SystemWorks 2005 Premier (8.x)  
Norton SystemWorks 2006 Premier (12.0.x)  
Symantec AntiVirus (10.x)  
Symantec AntiVirus (9.x)  
Symantec AntiVirus Client (8.x)  
Symantec AntiVirus Server (8.x)  
Symantec AntiVirus Win64 (10.x)  
Symantec Client Security (10.x)  
Symantec Client Security (9.x)  
Symantec Endpoint Protection Agent (5.x)  
Symantec Scan Engine (5.x)

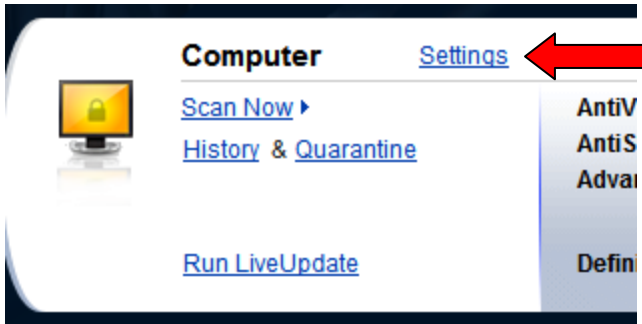
### **Trend Micro, Inc.**

PC-cillin 2002 (9.x)  
PC-cillin 2003 (10.x)  
ServerProtect (5.x)  
Titanium Maximum Security (3.x)  
Trend Micro AntiVirus (15.x)  
Trend Micro AntiVirus (16.x)  
Trend Micro Antivirus (11.x)  
Trend Micro Client/Server Security (6.x)  
Trend Micro Client/Server Security Agent (15.x)  
Trend Micro Client/Server Security Agent (16.x)  
Trend Micro Client/Server Security Agent (7.x)  
Trend Micro Client/Server Security Agent (8.x)  
Trend Micro Core Protection Module (1.x)  
Trend Micro HouseCall (1.x)  
Trend Micro Internet Security (11.x)  
Trend Micro Internet Security (12.x)  
Trend Micro Internet Security (16.x)  
Trend Micro OfficeScan Client (5.x)  
Trend Micro OfficeScan Client (6.x)  
Trend Micro OfficeScan Client (7.85.x)  
Trend Micro OfficeScan Client (7.x)  
Trend Micro OfficeScan Corporate Edition (5.x)  
Trend Micro OfficeScan Corporate Edition (6.x)  
Trend Micro OfficeScan Corporate Edition (7.x)  
Trend Micro PC-cillin 2004 (11.x)  
Trend Micro PC-cillin Internet Security 12 (12.x)  
Trend Micro PC-cillin Internet Security 14 (14.x)  
Trend Micro PC-cillin Internet Security 2005 (12.x)  
Trend Micro PC-cillin Internet Security 2006 (14.x)  
Trend Micro PC-cillin Internet Security 2007 (15.x)  
Trend Micro Titanium (2.x)  
Trend Micro Titanium (3.x)

### **Special Notice for Vista Users with Norton Anti-Virus 2009**

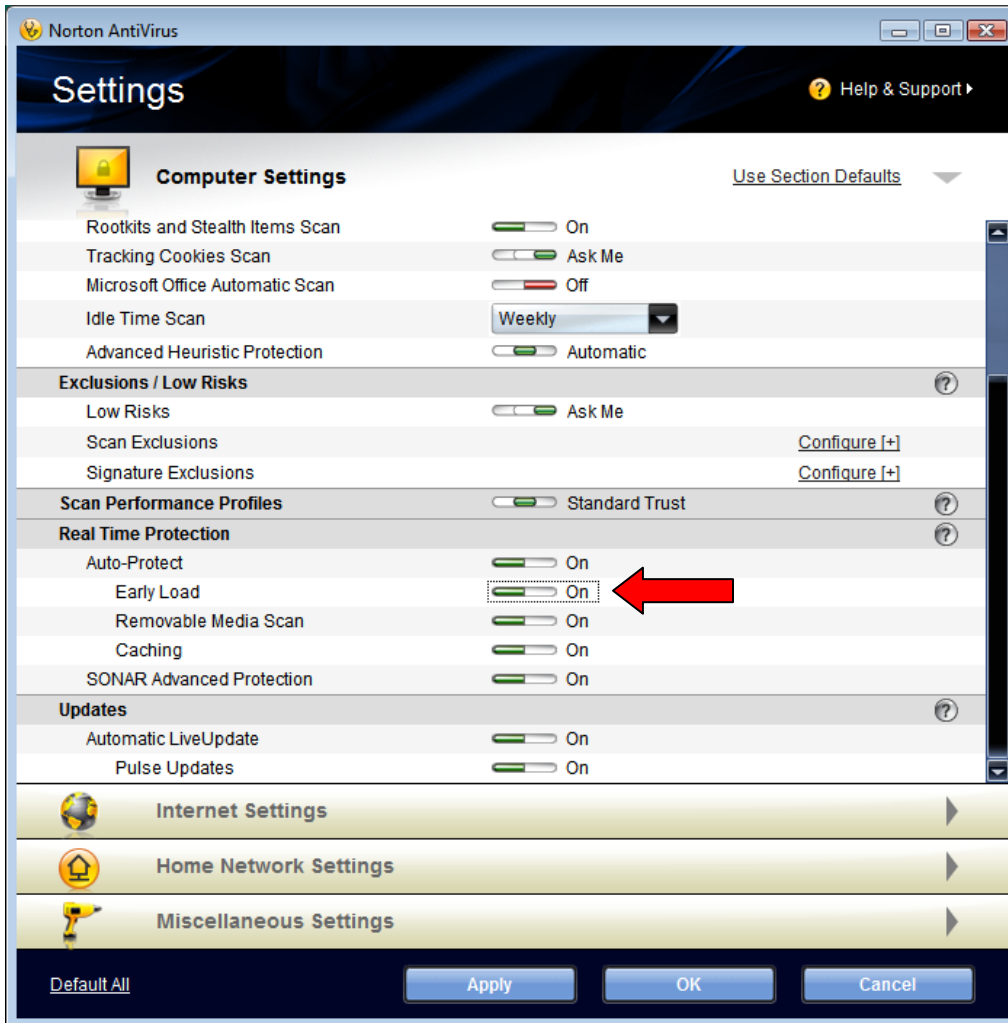
The Host Check may fail when using Norton Anti-Virus 2009 under Windows Vista, even though the virus definition files are up to date.

In order to pass the check, you will need to enable the “Early Load” feature in Norton Anti-Virus. To do this, open Norton Anti-Virus by double-clicking on the icon in the taskbar, or through the Start menu. In the top panel, beside “Computer”, select the “Settings” link.



•  
•  
•  
•  
•  
•  
•  
•  
•  
•

The window below will be displayed.



Turn “Early Load” on as indicated and click “OK”. You will need to reboot your computer for the change to take effect. You will be able to log into G2V after rebooting.