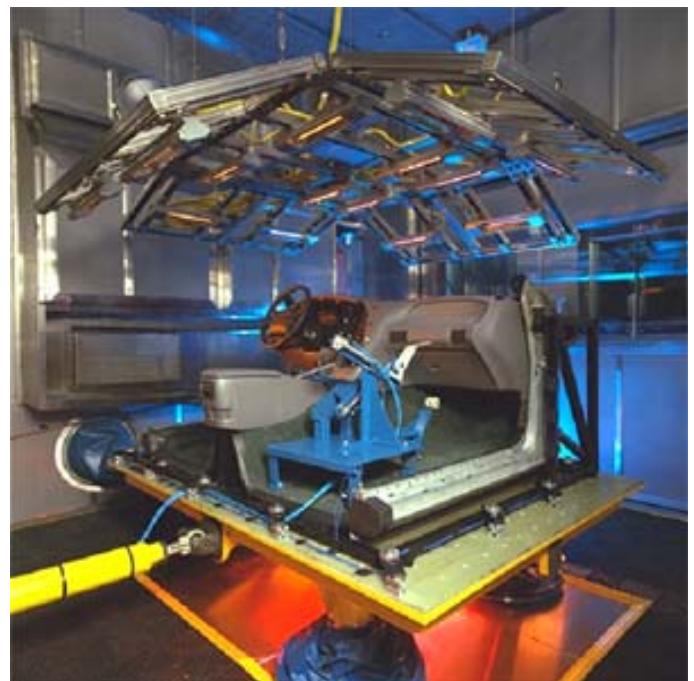


Dynamic Simulation



Dynamic Simulation replicates and accelerates real world usage stresses to assess component durability.

- **Single Axis Vibration Testing:**
Vibration can be applied to products in vertical, lateral, and longitudinal directions using electro-dynamic shakers to characterize dynamic performance.
- **Field Data Replication:**
Acceleration, load, and rotational inputs measured in field service environments can be analyzed, edited and subsequently used to control laboratory test rigs. These accelerated durability tests can save significant time compared to conventional proving ground tests.
- **Multi Axis Shaker Tables (MAST) and CUBE™**
Hydraulic shaker systems with six-degrees of freedom that enable accurate real-time simulation of road surface induced vibration inputs. These systems are capable of simultaneous control of vertical, lateral and longitudinal motion as well as roll, pitch, and yaw. These systems are installed in walk-in style environmental chambers that control temperature, humidity and radiant heat load.
- **Full Vehicle Simulator (4-Post)**
A full vehicle, tire-coupled road simulator test cell (4-Post) with environmental capabilities. Used to perform durability testing of body-mounted components as well as NVH and squeak and rattle diagnostics on passenger cars and light trucks.
- **Key Life Testing**
Systems and components can be tested under all customer usage and environmental conditions using road load data inputs as well as duty cycle inputs correlated to real world conditions.



Visteon Corporation Test Operations

One Village Center Drive
Van Buren Township, MI 48111
Phone: 1-800-VISTEON
E-mail: testlabs@visteon.com
URL: <http://www.visteon.com/testing>